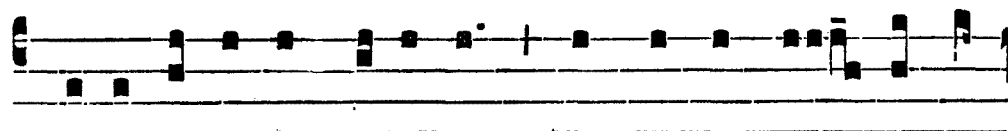


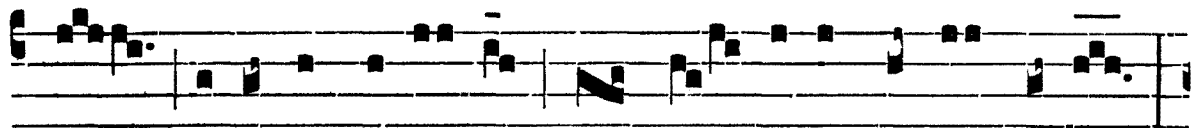
29. IN DEDICATIONE  
S. MICHAELIS ARCHANG.

**B**

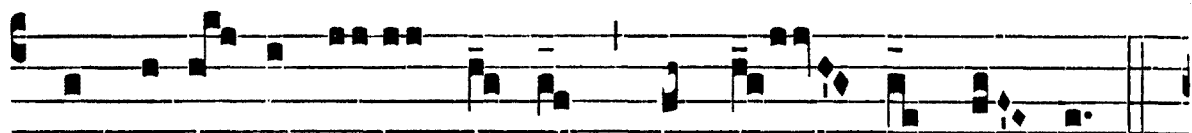
Introitus. 3.



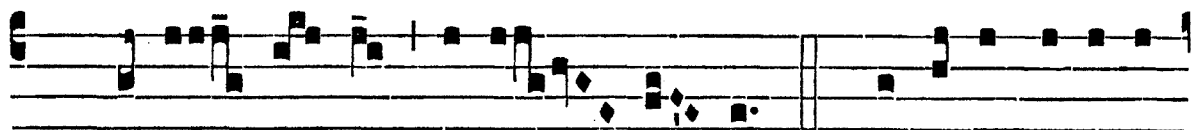
ENEDI-CI-TE Dómi-num \* omnes Ange- li e-



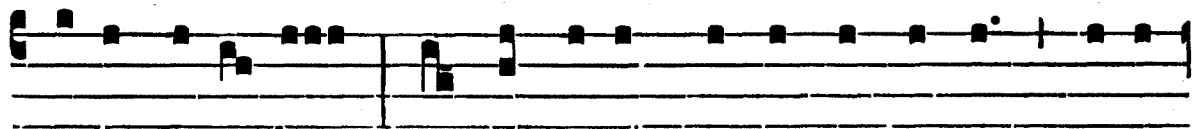
jus : pot-éntes virtú- te, qui fá- ci-tis verbum e-jus,



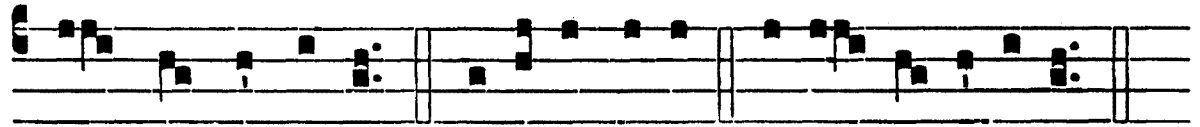
ad audi- éndam vo- cem sermó- num e- jus.



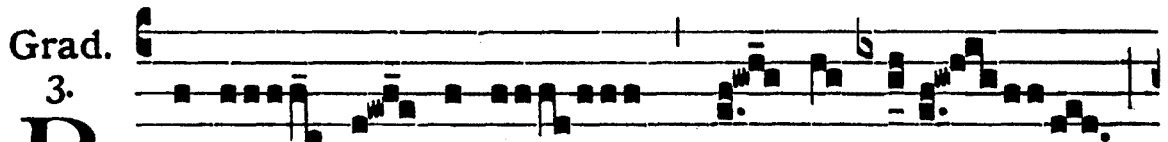
*T. P.* Alle- lú- ia, alle- lú- ia. *Ps.* Bé-ne-dic á-nima



me- a Dómi- no : \* et ómni- a quae intra me sunt, nómi-



ni sancto e- jus. Gló-ri- a Patri. E u o u a e.

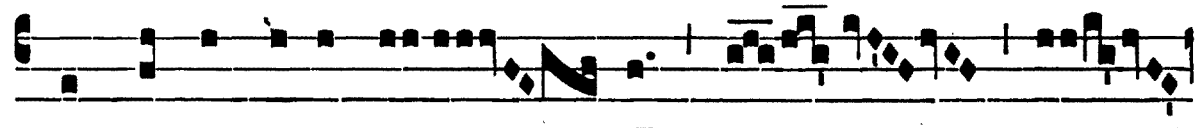


Grad.

3.

**B**

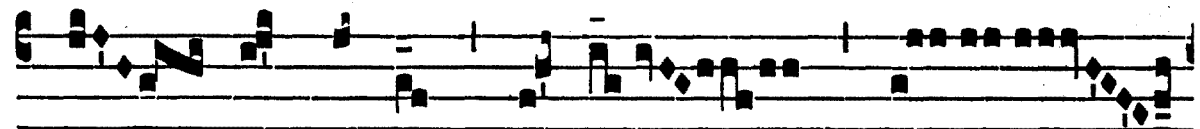
Ene- dí- ci- te \* Dó- mi- num



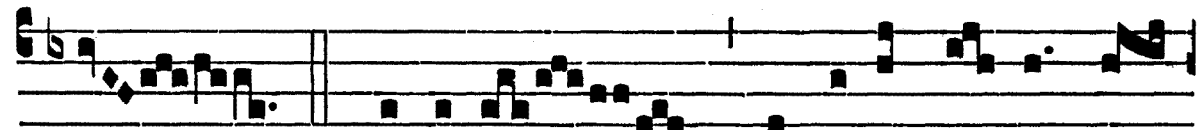
omnes Ange- li e- jus :



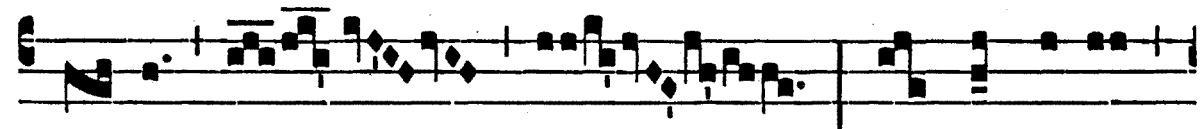
pot-én- tes vir- tú- te, qui fá-



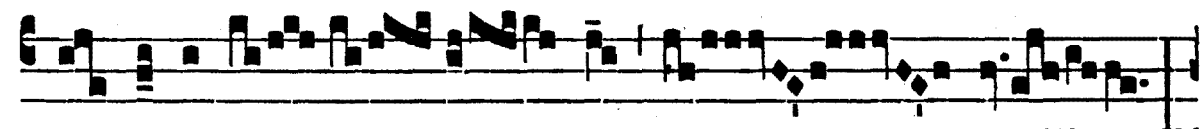
ci- tis verbum e- jus.



∇. Bé- ne- dic á- nima me- a Dó-



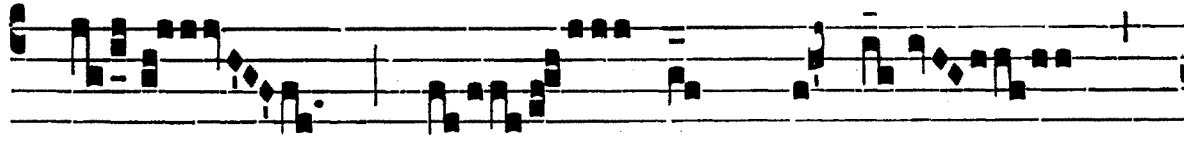
mi- num, et ómni- a



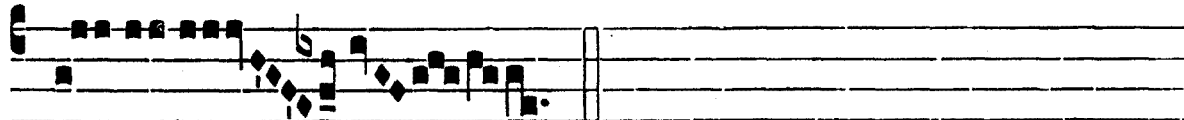
in- ter- i- ó- ra me- a



no- men

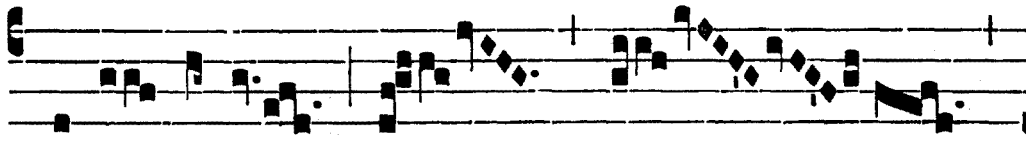


san- ctum \* e- jus.

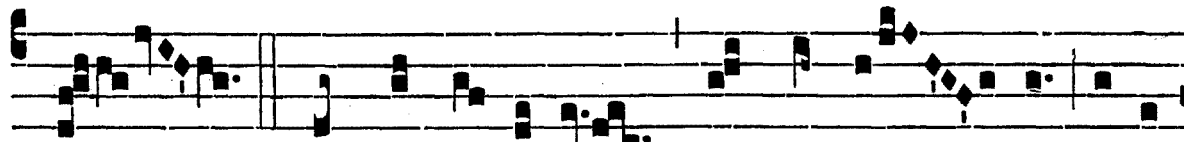


8.

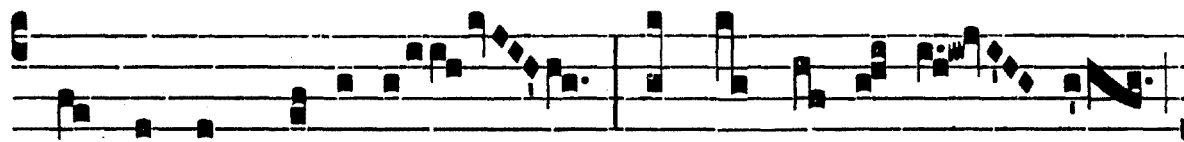
**A**



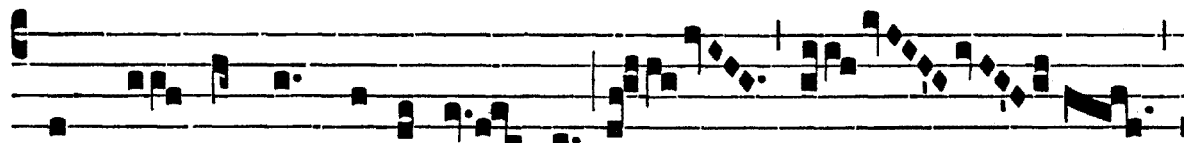
L-le- lú-ia. \* *ij.*



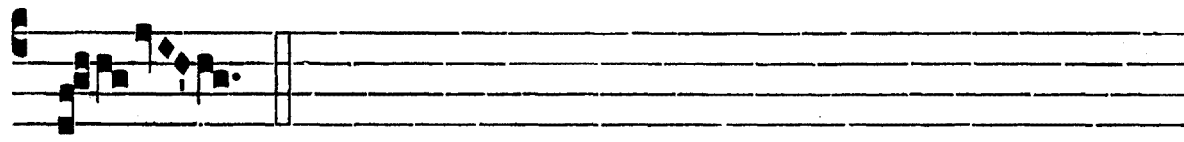
∇. Sancte Mícha- el Archánge- le, de-fén-



de nos in proéli- o : ut non per- e- á- mus



in tre- méndo \* ju-dí-ci- o.



Offert.

I.

**S**

Te- tit \* Ange- lus juxta

a- ram tem- pli, ha- bens thu-rí-bu-

lum áu- re- um in manu su- a : et da-ta

sunt e- i incénsa mul- ta : et ascén-

dit fu- mus a- ró- ma- tum

in conspéctu De- i, alle- lú-ia.

Comm.  
3.  
**B** E- ne- dí- ci- te \* omnes Ange- li Dómi- ni

Dó- mi- num : hymnum dí- ci- te, et su- per- exaltá- te

e- um in saé- cu- la. *T. P.* Al- le- lú- ia.