

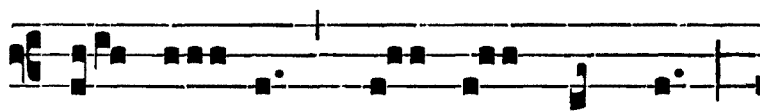
IN NATIVITATE DOMINI

AD PRIMAM MISSAM.

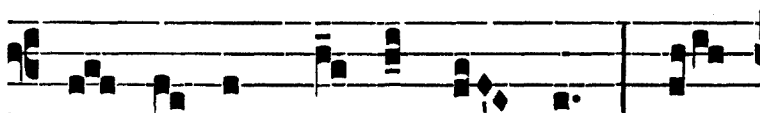
IN NOCTE.

Introitus. 2.

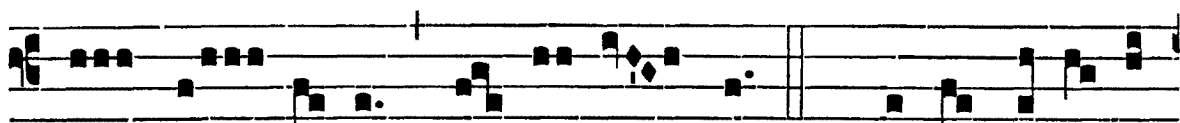
D



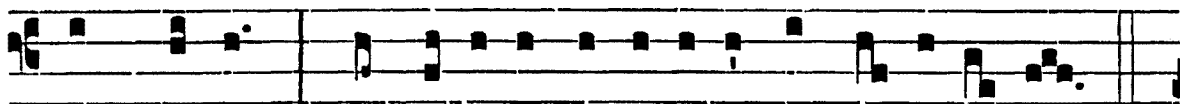
O- MI- NUS * dí- xit ad me :



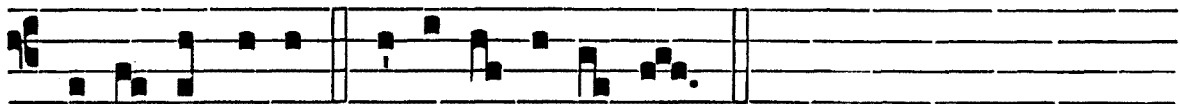
Fí- li- us me- us es tu, e-



go hó- di- e gé- nu- i te. *Ps.* Qua-re fremu- é-



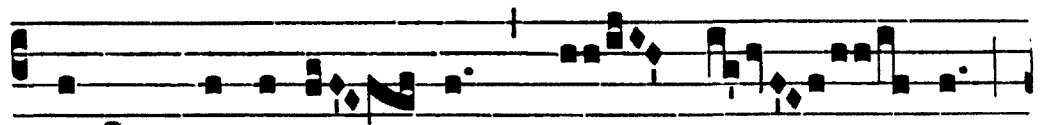
runt gentes : * et pópu- li me- di- tá- ti sunt in- á- ni- a?



Gló- ri- a Patri. E u o u a e.

Grad.
2.

T



Ecum princí-pi- um * in di- e



vir-tú- tis tu- ae : in splendó-



ri- bus sanctó- rum, ex ú- te- ro



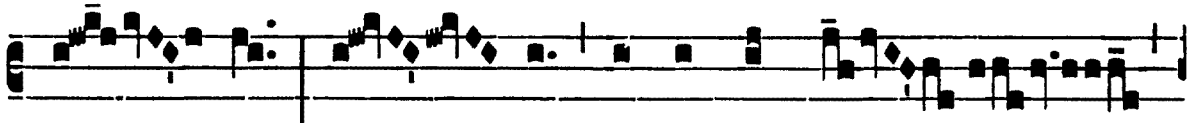
an-te lu- cí- fe- rum gé-



nu- i te. *∩*. Di- xit Dó-



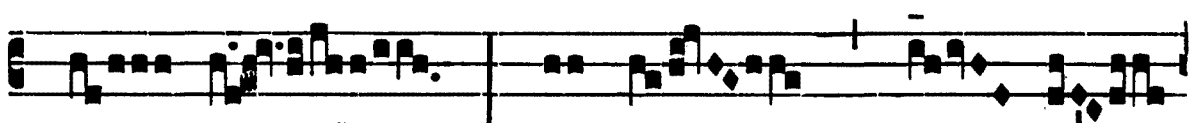
mi- nus Dómi- no me-



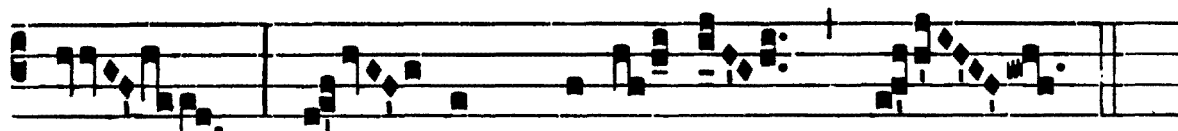
o : Se- de a dextris me-



is : do- nec po- nam in- imí- cos



tu- os sca- bél- lum



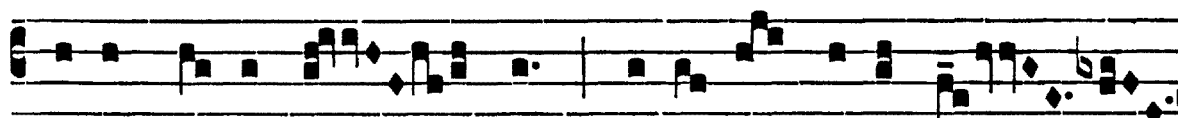
pe- dum * tu- ó- rum.

8.

A



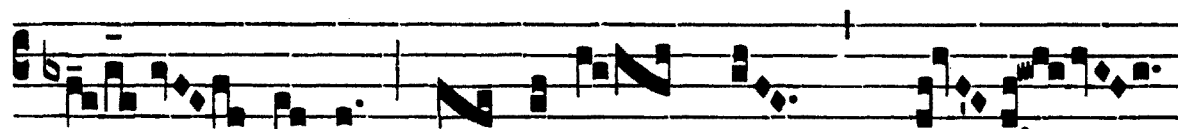
L- le- lú- ia. * *ij.* ∇. Dó-



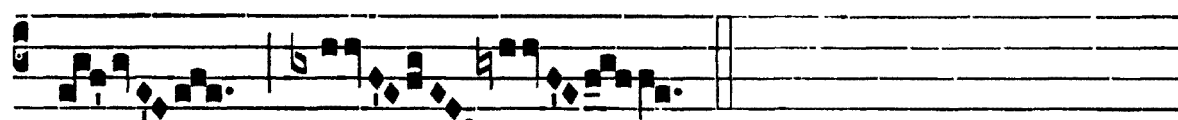
mi-nus di-xit ad me : Fí-li- us me- us es



tu, e- go hó-



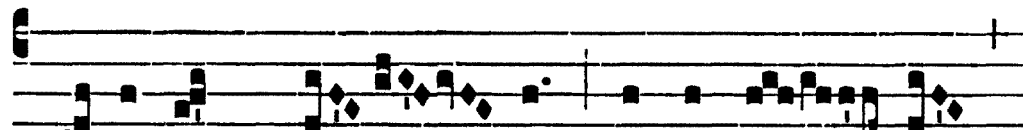
di- e * gé- nu- i te.



Offert.

4.

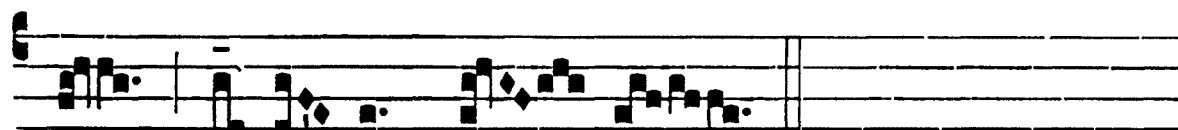
L



Aeténtur * cae- li, et exsúl- tet



ter- ra an- te fá- ci- em Dó- mi-



ni : quó-ni- am ve- nit.

Comm.

6.

I N splendó- ri-bus * sanctó- rum, ex ú- te- ro

an-te lu- cí- fe-rum gé- nu- i te.