

Die 2 Februarii.

IN PURIFICATIONE B. MARIÆ VIRGINIS.

*Finitis Orationibus, cum Celebrans inceperit distribuere candelas,
a Choro cantatur :*

L Antiphona. 8.
UMEN * ad re-ve-la-ti-ónem génti-um : et gló-

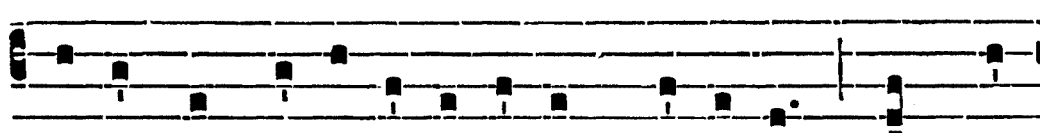
ri-am ple-bis tu-ae Isra-el. *Cant.* Nunc dimíttis servum

tu-um, Dómi-ne, * secúndum verbum tu-um in pa-ce.

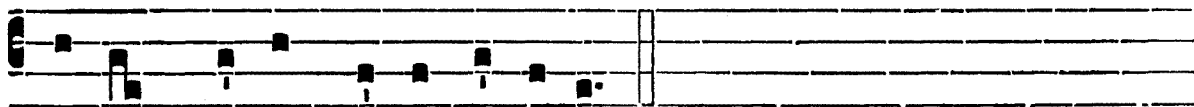
Anti-
phona Lumen ad re-ve-la-ti-ónem génti-um : et gló-

ri-am ple-bis tu-ae Isra-el.

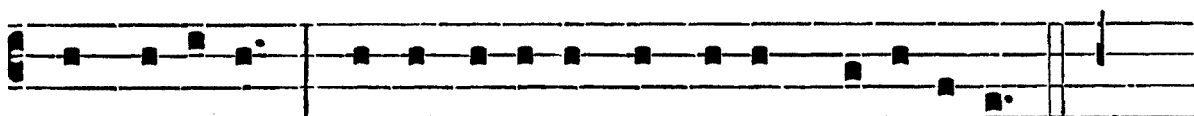
Qui-a vi-dé-runt ó-cu-li me-i * sa-lu-tá-re tu-um.

Anti-
phona

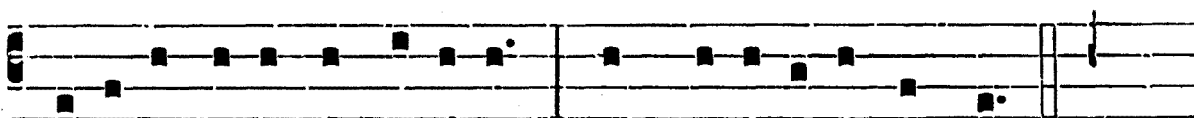
Lumen ad re-ve-la-ti-ó-nem génti-um : et gló-



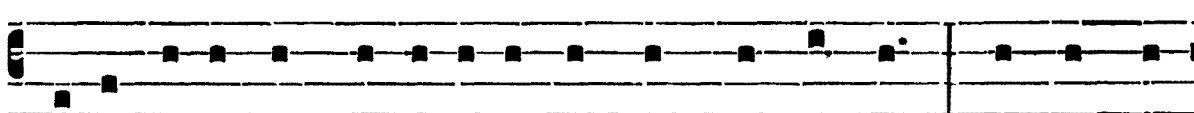
ri-am ple-bis tu-ae Isra-el.

Antiphona Lumen. similiter repetitur post quemlibet versum.

Quod pa-rásti * ante fá-ci-em ómni-um popu-ló-rum. Lumen.



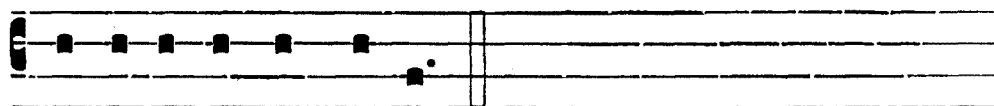
Gló-ri-a Patri, et Fí-li-o, * et Spi-rí-tu-i Sancto. Lumen.



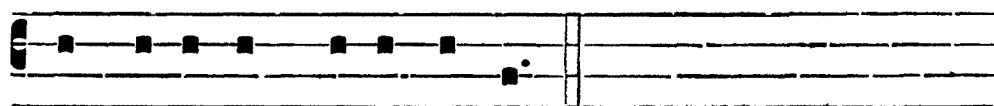
Sic-ut e-rat in princí-pi-o, et nunc, et semper, * et in saé-



cu-la saecu-ló-rum. Amen. Lumen.

*Deinde fit Processio.*Diaconus
dicit :

Pro-cedá-mus in pa-ce.

Et Chorus
respondet :

In nó-mi-ne Christi. Amen.

Progreditur Processio, et cantantur Antiphonae sequentes.

Ant.

6.

A

D-ór-na * thá-lamum tu- um, Si- on, et sú-
 ci-pe Regem Chri- stum : amplécte-re Ma- rí- am,
 quae est caelé- stis porta : i-psa e-nim por- tat Re-
 gem gló-ri- ae no-vi lúmi-nis : subsístit Virgo
 addú-cens má-ni-bus Fí- li- um ante lu-cí- fe- rum :
 quem accí-pi- ens Síme- on in ulnas su- as praedi- cá-
 vit pó-pu- lis DÓ- mi-num e- um es-se vi- tae
 et mortis, et Salva-tó-rem mun- di.

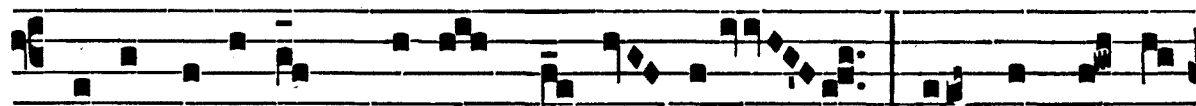
Alia
 Ant. 2.

R

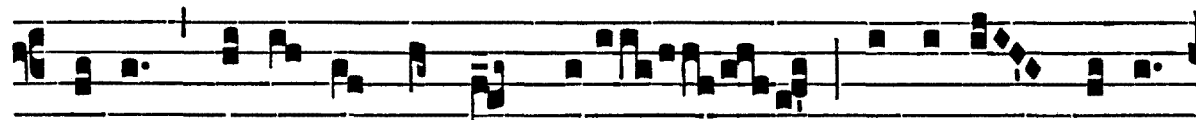
Espón-sum * accé-pit Sí-me-on a



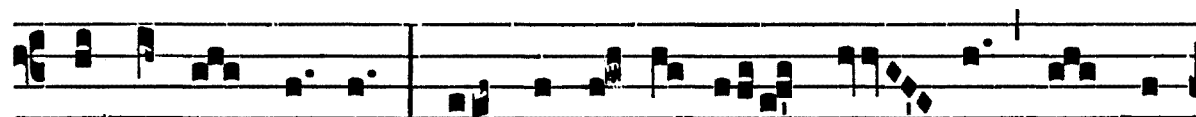
Spí-ri-tu Sancto, non vi-sú-rum se mortem,



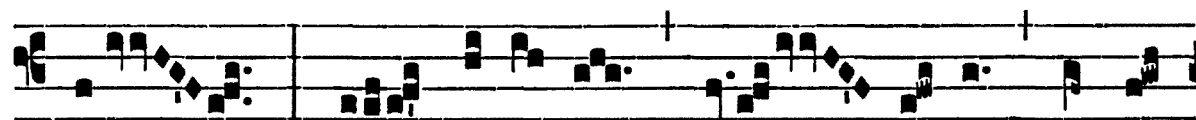
ni-si vi-dé-ret Christum Dó-mi-ni : et cum indú-



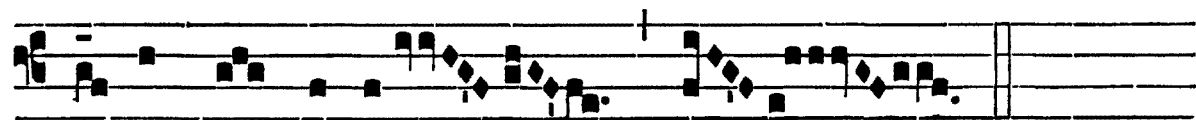
ce-rent pú-e-rum in templum, accé-pit e-um



in ulnas su-as, et be-ne-dí-xit De-um, et di-



xit : Nunc dimít-tis, Dó-mi-ne, servum



tu-um in pa-ce.

Et ingrediendo ecclesiam, cantatur :

Resp.

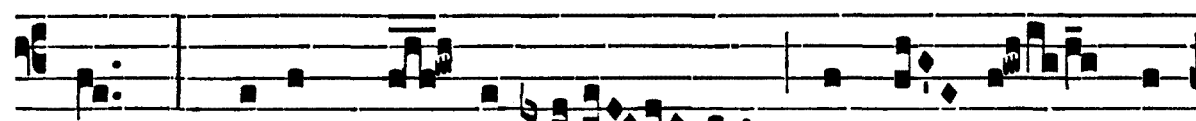
2.

O

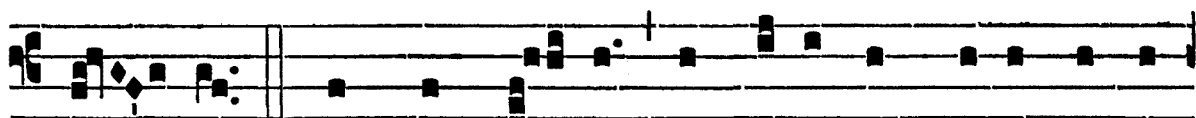
B-tu-lé-runt * pro e-o Dó-mi-no par túr-



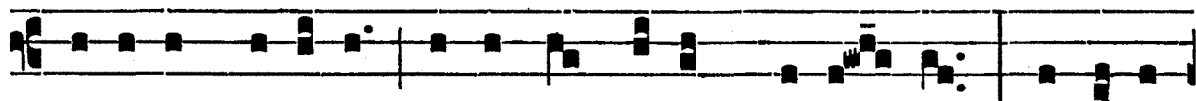
tu-rum, aut du-os pul-los co-lum-bá-



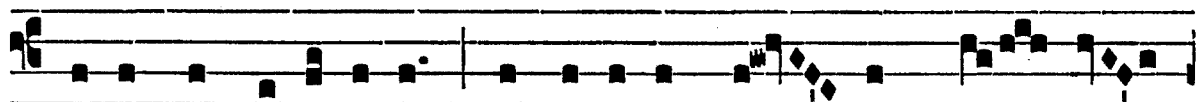
rum : * Sic-ut scri-ptum est in le-ge Dó-



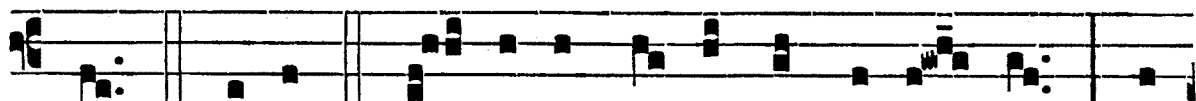
mi- ni. ∇ . Postquam au- tem implé-ti sunt di- es purga-



ti ó-nis Ma-rí-ae, se-cúndum legem Mó- y- si, tu-lé-runt



Je-sum in Je-rú-sa-lem, ut síste-rent e- um Dó- mi-



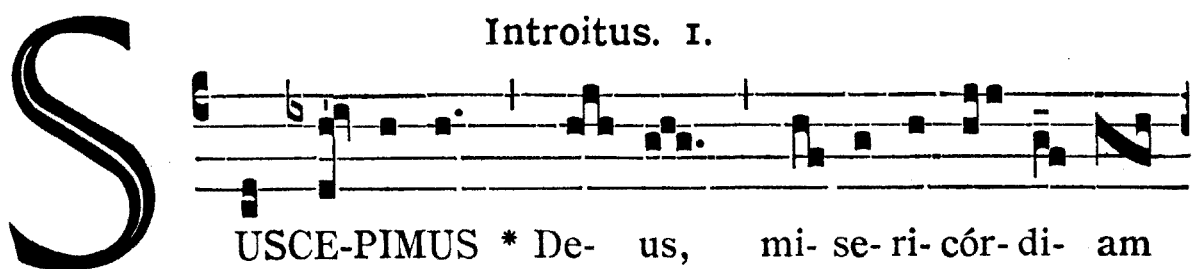
no. * Sic-ut. Gló- ri- a Pa-tri, et Fí- li- o, et



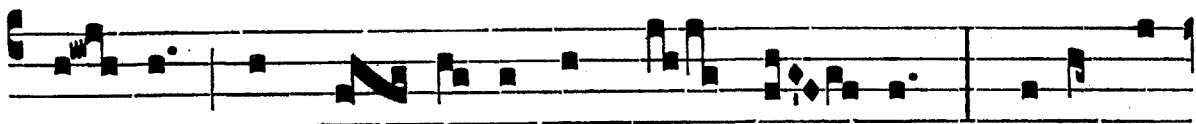
Spi-rí- tu- i San- cto. * Sic-ut.

AD MISSAM.

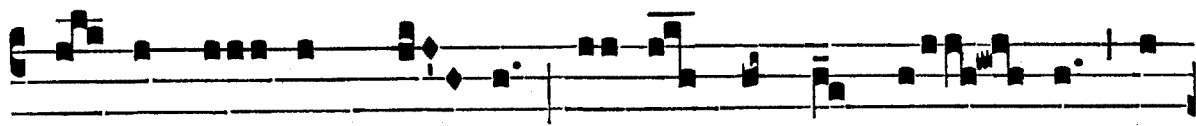
Introitus. I.



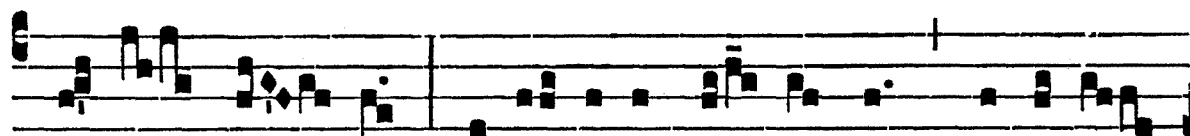
USCE-PIMUS * De- us, mi- se- ri- cór- di- am



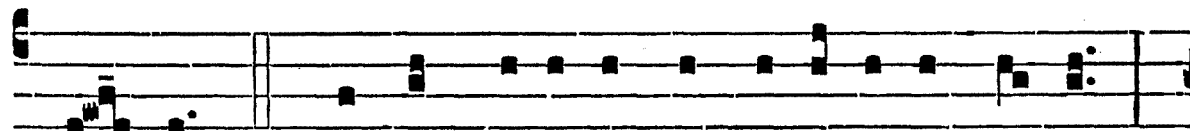
tu- am in mé- di- o templi tu- i: se-cúndum



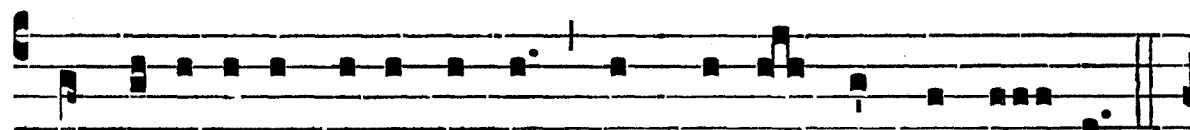
no- men tu- um De- us, i- ta et laus tu- a in



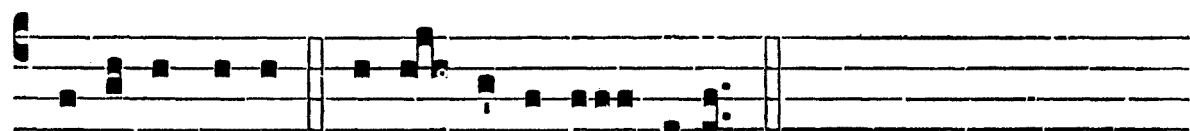
fi-nes ter-rae : justí-ti-a ple-na est dέxte-ra



tu- a. *Ps.* Magnus Dómi-nus, et laudá-bi-lis ni-mis : *



in ci-vi-tá-te De-i nostri, in monte sancto e- jus.



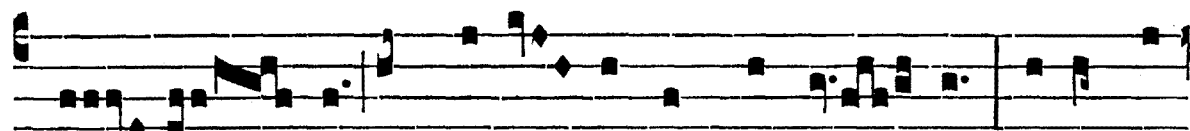
Gló-ri-a Patri. E u o u a e.

Grad.

5.

S

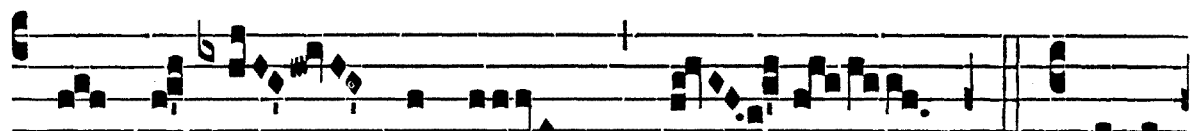
Uscé-pimus, * De- us, mi-se- ri-córdi- am



tu- am in mé-di- o templi tu- i : se-cúndum



nomen tu- um, De- us, i- ta et laus tu- a



in fi- nes terrae.

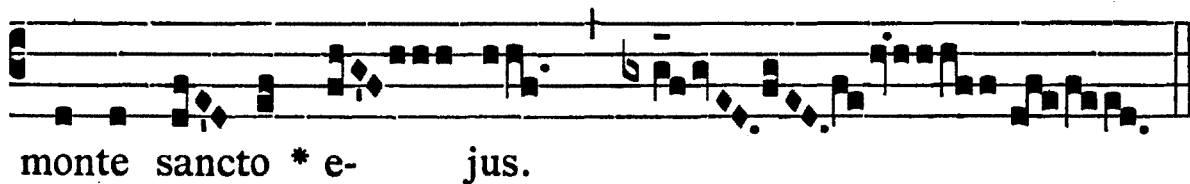
∇ Sic-ut



au-dí-vimus,

i- ta

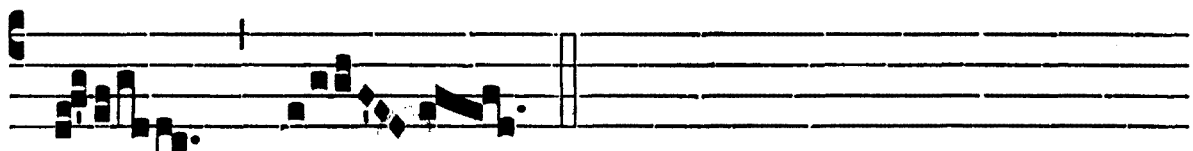
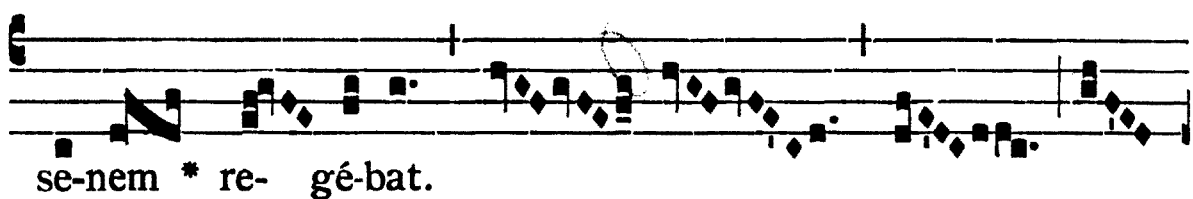
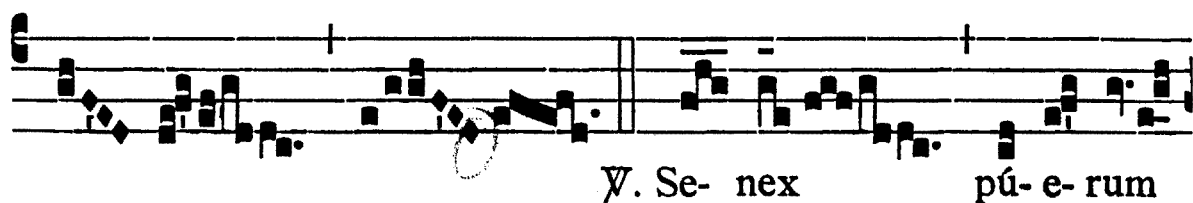
et



I.

A

L-le- lú- ia. * ij.



Post Septuagesimam, omissis Allelúia et ¶. sequenti, dicitur :

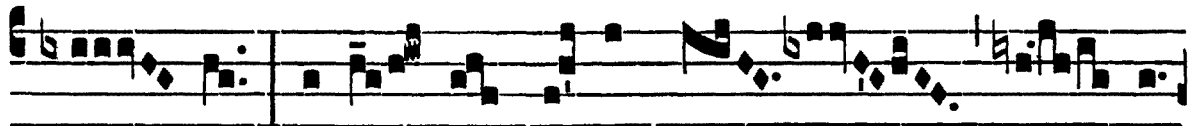
Tract.

8.

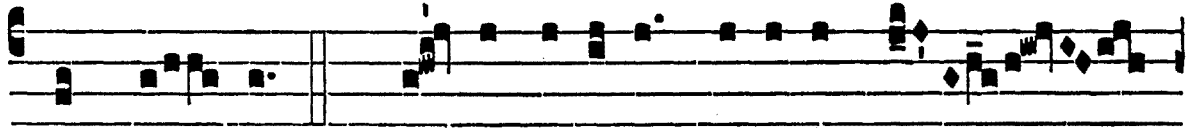
N

Unc di-míttis

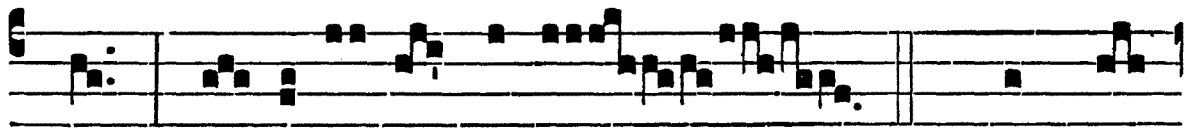
* servum tu- um, Dó-



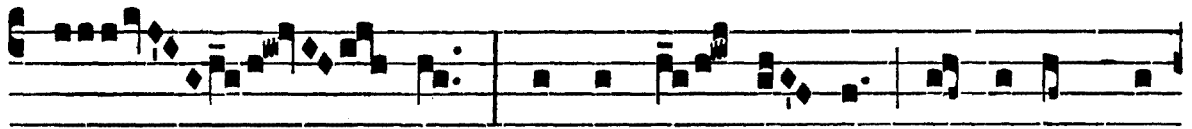
mi- ne, se-cún- dum verbum tu- um



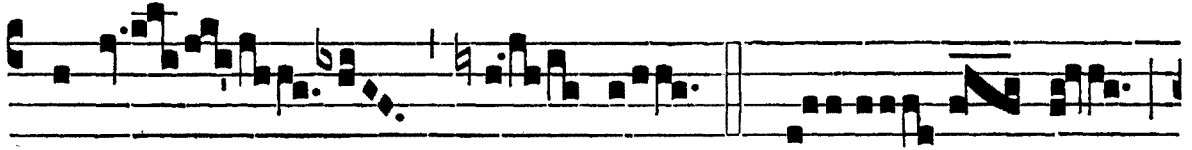
in pa- ce. *∇*. Qui- a vi-dé-runt ó-cu-li me-



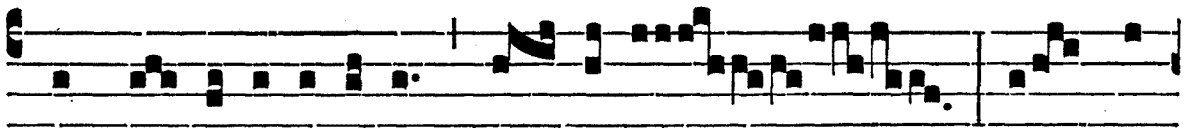
i sa- lu-tá- re tu- um. *∇*. Quod pa-



rá- sti ante fá- ci- em ómni- um po-



pu-ló- rum. *∇*. Lu- men



ad re- ve- la- ti- ó- nem gén- ti- um, et gló-



ri- am ple- bis tu- ae * Isra- el.



Offert. 8.

D Iffú- sa est * grá- ti- a in
 lá- bi- is tu- is : proptér- e-
 a be- ne-dí- xit te De- us in ae-
 tér- num, et in saé- cu- lum saé-
 cu-li. *T.P. Alle-*
 lú- ia.

Comm. 8.

R Espónsum * accé-pit Síme- on a Spí-ri-tu
 Sancto, non vi-sú- rum se mortem, ni- si vi-dé-ret Chri-
 stum Dómi- ni.